

NORTHEAST DISTRICT DEPARTMENT OF HEALTH

Waste Water Treatment System Installation Information

Plastic Infiltrators www.infiltratorwater.com

Below are specifications on the two most common types of infiltrators.

Quick4® Standard Chamber (see back)

Size	34"W x 53"L x 12"H
Effective Length	48" (1219 mm)
Storage Capacity	43 gal (163 L)
Invert Height	8" (203 mm)

Quick4® High Capacity Chamber (see back)

Size	34"W x 53"L x 16"H
Effective Length	48" (1219 mm)
Storage Capacity	62 gal (235 L)
Invert Height	11.5" (292 mm)

Materials

Use acceptable pipes and materials for subsurface sewage disposal systems in accordance with the State of Connecticut Public Health Code Section 19-13-B103.

1. From house to D-Box - 2" schedule 40 piping (ASTM D1785/2665).
2. Air gaps/breaks in conveyance piping outside of the building foundation shall meet the minimum separation distances.
3. Plastic D-Box must be installed prior to trench.
4. Piping from D-Box to trench - Schedule 35 (ASTM D3034).
5. 1 ¼" stone to be used around infiltrators. Stone shall be free of silt, dirt and debris.
6. Approved filter fabric - (Terratex P01.5 or other approved fabric) to be installed over trench.
7. In addition to installation permit from NDDH, all other applicable permits (electrical, plumbing, etc.) shall be obtained from the local building official.

**** See attached diagrams**

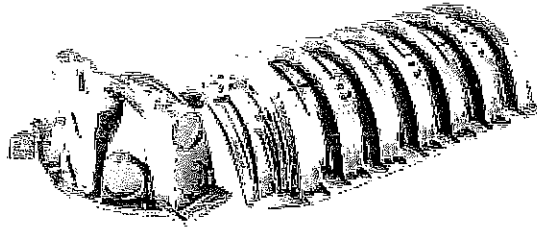
Product Line
Benefits
Septic Product Line

QUICK4 ISI CHAMBERS

The Quick4 Standard and Quick4 High Capacity Chambers have advanced contouring connections that swive 10 degrees, right or left. Both chambers can support wheel loads of 16,000 lbs / axle with only 12 inches of cover.

The Quick4 Standard Chamber

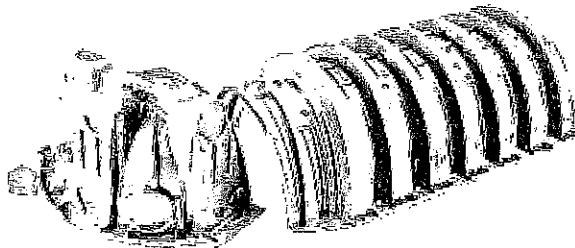
The Quick4 Standard Chamber fits into a 36 inch wide trench. Its MultiPort end cap with eight molded-in inlets/outlets allows multiple piping options and eliminates pipe fittings.
[Download product specs here. \(PDF\)](#)



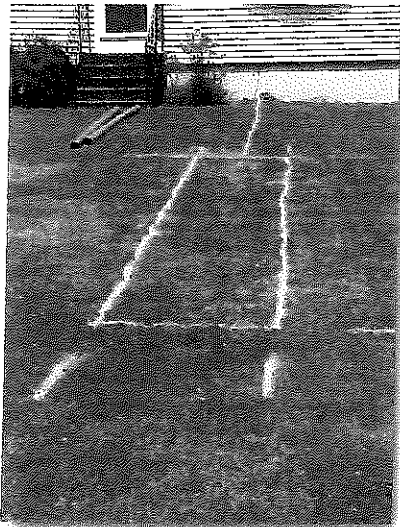
Size (W x L x H).....34" x 53" x 12" (85 cm x 135 cm x 31 cm)
 Storage Capacity.....43.5 gal (165 L)
 Louvered Sidewall Height.....8" (20 cm)

The Quick4 High Capacity Chamber

The Quick4 High Capacity Chamber fits into a 36 inch wide trench. Its MultiPort end cap with eight molded-in inlets/outlets allows multiple piping options and eliminates pipe fittings.
[Download product specs here. \(PDF\)](#)



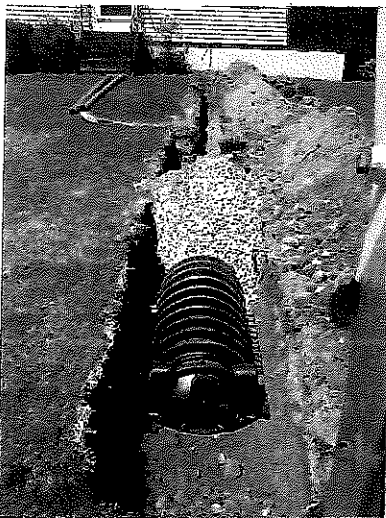
Size (W x L x H).....34" x 53" x 16" (86 cm x 135 cm x 41 cm)
 Storage Capacity.....62 gal (235 L)
 Louvered Sidewall Height.....12" (30 cm)



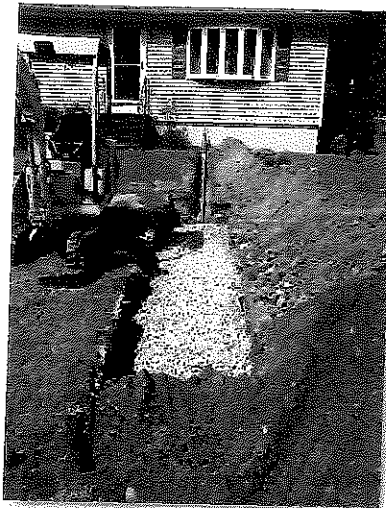
1. Mark out area for system.
 CEYD 1-800 942-4455 or 811



2. Trench area for system.



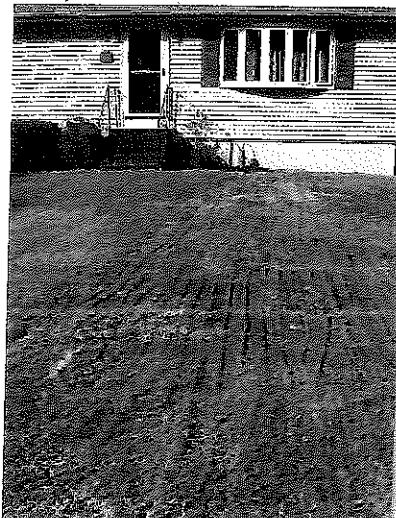
3. Start installing system



4. Run pipe from source to drain



5. Gravel provides extra capacity, filter fabric protects gravel from mixing with backfill. Both are optional per manufacturer.



6. System is backfilled and seeded to prevent erosion.



7. Drain is installed outside the home to prevent flooding in the event system ever fails.

